



Commercial LED Lighting Program



Energy Efficiency Program

By your local public electric utility together with the Municipal Energy Agency of Nebraska

The Commercial LED Lighting Program provides a cash incentive to replace less efficient lighting products with new, high-efficient lighting. The program offers incentives (while funds last) to help cover the cost of energy efficient upgrades.

Benefits of LED lighting

LED lighting provides several benefits over older, less efficient lighting:

- Long life
- Good cold-temperature performance
- Dimmability
- No mercury content
- Resistance to vibration and breakage

LED Lighting Facts

- An LED (Light Emitting Diode) is a type of solid-state lighting that can be seven times more energy efficient than conventional incandescent lights and cut energy use by more than 80 percent.
- Good Quality LED bulbs can have a useful life of 50,000 hours or more
- LEDs are resistant to vibration and don't break as easily as conventional lamps. Vibration resistance is a plus for lighting near industrial equipment.
- LEDs emit light in a specific direction, reducing the need for reflectors and diffusers that can trap light. This makes LEDs more efficient for many uses such as recessed down lights and task lighting or in retail displays.
- LEDs emit light in a wide range of colors, allowing for different color combinations to create color effects for signage and display lighting.

Application and Program Guidelines

An application form and program guidelines, terms and conditions are available at www.nmppenergy.org/mean.

Lighting Efficiency Measures

High Bay/Low Bay Lighting

9-65 watts.....	\$20 per fixture
66-130 watts.....	\$40 per fixture
131-240 watts.....	\$60 per fixture

Customer Incentive

LED Exit Signs

Under 8 watts	\$10 per fixture
---------------------	------------------

Linear Fluorescent Replacement or Retrofit

9-22 watts.....	\$5 per fixture
23-45 watts	\$10 per fixture
46-68 watts	\$15 per fixture
69-90 watts.....	\$20 per fixture

Fluorescent Freezer/Refrigerator Case

5' or 6' strips	\$20 per fixture
-----------------------	------------------

Customized Request

Customized requests may be approved by MEAN on a case-by-case basis..... Incentive TBD

Note: Exterior lighting excluded

How to Get Started

- 1) Discuss project with your electric utility staff and pick up an application.
- 2) Obtain a contractor who will verify the project and complete the pre-authorization form.
- 3) Within 90 days of pre-authorization install qualifying energy-efficient lighting products listed on this sheet using the licensed contractor.
- 4) Complete the application form after installation.
- 5) Submit the signed application, along with proof of purchase (identified in the applications terms and conditions) to your local utility to receive the incentive within 4-6 weeks.

Program guidelines and applications are available at

www.nmppenergy.org/mean

Program Contact: Amanda Hansen (ahansen@nmppenergy.org)

MEAN

MUNICIPAL ENERGY AGENCY OF NEBRASKA



Attic Insulation Program



Energy Efficiency Program

By your local public electric utility together with the Municipal Energy Agency of Nebraska

Customers participating in the Residential Attic Insulation Program are eligible for an incentive of \$0.15 / square foot with a maximum incentive amount of \$300 per existing residential dwelling. New construction and/or additions do not qualify.

Start With Your Attic

On a sunny summer day, with the hot sun blasting directly on the roof, attics can get up to 140°F when the inside of the house is 75°F. That is a 65°F temperature differential.

Your house acts like a chimney in the winter, where cooler air enters the house in the lower areas and attempts to exit the house in the warmer, higher areas. A house with a poor and leaky envelope will show significant heat loss through the attic and eaves.

If you have little insulation in the attic (six inches or less on average) and add at least six inches or R-19, take advantage of this Residential Insulation Program. To be eligible, customers must have a heat pump or electric furnace or electric heat (baseboard, radiant, etc.).

Key Points

- Existing dwellings only, no new construction or additions
- Primary heating system must be electric or a heat pump or electric heat (baseboard, radiant, etc.)
- Existing attic insulation levels are assumed to be an average six (6) inches or less
- Must install six (6) inches or more or an R-19 value of new insulation
- Area insulated may be less than total attic area
- Proof-of-purchase must indicate type & quantity of insulation installed
- Incentives calculated by taking area insulated (Square Feet) times (x) \$0.15 per Square Foot = Incentive \$\$\$
- Incentives limited to \$300 per dwelling, although area insulated may be greater than 2,000 Sq. Ft
- Duplexes and multi-family dwellings qualify if each residence is individually metered
- Multi-family dwellings that are master-metered do not qualify

Guidelines

The following guidelines will generally apply. Exceptions will be handled on a case-by-case basis.

1. This program is for the installation of attic insulation only. All other insulation installations (i.e. – walls, floors, crawl spaces, foundations, etc.) do not qualify.
2. Only Residential customers/owners qualify for the attic insulation energy efficiency incentives. Duplexes and multi-family dwellings in which each residence is individually metered are eligible for one incentive per dwelling.
3. To qualify, dwellings must use electricity as the primary fuel source for heating. Customers that have air source heat pumps with natural gas or propane backup furnaces do qualify. Also, existing attic insulation levels must average six (6) inches or less and six (6) inches or more or an R-19 value of new insulation must be added to the area insulated.
4. Incentives are calculated at the rate of \$0.15 per square foot insulated with a maximum of \$300 per dwelling.
5. New construction or additions to existing dwellings do not qualify.
6. An incentive will be provided to the person responsible for purchasing the insulation after the insulation is installed. No incentive(s) will be paid without the completion of the application form. The application form must then be signed by the owner and installing contractor (if applicable). The completed application form will then be submitted to the electric utility for installation verification. Sales receipt(s) or invoice(s) itemizing the new insulation indicating the type, amount, and purchase date must accompany each energy efficiency incentive application. Insulation must be purchased and installed on or after June 1, 2019.
7. Participating electric utilities are those that are wholesale customers of the Municipal Energy Agency of Nebraska (MEAN). MEAN members/participants are listed at www.nmppenergy.org/mean.
8. The MEAN Services Committee and staff will make final determination of program compliance decisions and reserves the right to cancel the program with 30 days notice.

Program guidelines and applications are available at

www.nmppenergy.org/mean

Program Contact: Amanda Hansen (ahansen@nmppenergy.org)

MEAN

MUNICIPAL ENERGY AGENCY OF NEBRASKA



Smart Thermostat Program



Energy Efficiency Program

By your local public electric utility together with the Municipal Energy Agency of Nebraska

If you have a home Wi-Fi connection and a central air-conditioning or heat pump system, you may qualify for an incentive of up to \$100 for installing a qualifying smart thermostat.

Smart thermostat technology from brands such as Honeybee, Nest and Ecobee is most beneficial for households that have extended periods during the day when no one is home, those that turn their thermostat down during bedtime hours or those that have irregular occupancy through the week, month or year.

Incentives

Primary Electric Heat (Professionally Installed) \$100

Primary Electric Heat (Customer Installed) \$75

Primary Fossil-Fuel Heat (Professionally Installed) \$50

Primary Fossil-Fuel Heat (Customer Installed) \$25

Qualifications

- Eligible smart thermostats must be an ENERGYSTAR-certified Smart Thermostat. A list of eligible smart thermostats can be found at <http://www.energystar.gov/productfinder/product/certified-connected-thermostats/results>
- Confirm your home's HVAC system is compatible with the selected thermostat.
- Install the thermostat (professional installation is recommended) and ensure an operative Wi-Fi connection.
- Complete and submit incentive application with proof-of-purchase to your local electric utility for installation verification. If professionally installed, submit copy of your contractor's invoice.

Guidelines

1. Smart thermostats must be purchased and installed on or after June 1, 2019. Completed application and supporting documentation must be submitted within 6 months of installation. All other thermostat installations do not qualify.
2. Only Residential customers/owners that have a home Wi-Fi connection and a central air conditioning or heat pump system qualify for Smart Thermostat energy efficiency incentives. Duplexes and multi-family dwellings in which each residence is individually metered are eligible. Commercial, industrial and other customer classes do not qualify.
3. Offer is limited to one incentive per residential central forced-air heating and cooling (HVAC) system and up to two (2) qualifying systems per household.

4. New construction or additions to existing dwellings do not qualify. To be eligible for an incentive, household must be heated during the winter months of October through May.
5. For applicants of rented or leased residences, applicant must receive permission from the property owner to install the equipment. Submission of an application indicates that the tenant has obtained this permission.
6. "Professionally Installed" is the term used in this program to identify that the installation was completed by a qualified professional contractor. Most often this will be a heating and cooling contractor. If professionally installed, a copy of contractor invoicing is required to be eligible for the additional \$25 incentive.
7. Qualifying Smart Thermostats must be purchased, installed and connected through a permanent, home-based Wi-Fi connection before an energy efficiency incentive is issued.
8. An incentive will be provided to the person responsible for purchasing and installing the Smart Thermostat. No incentive(s) will be paid without the completion of the application form. The application form must then be signed by the owner and installing contractor (if applicable). The completed application form and a copy of sales receipt(s) or invoice(s) identifying the Brand, Model Number, Purchase Date, and Retailer Name must accompany each smart thermostat incentive application when submitted to the local electric utility for installation verification.
9. The incentive payment to the person responsible for purchasing and installing the Smart Thermostat will come directly from the Municipal Energy Agency of Nebraska (MEAN). Please allow 45 days for delivery of incentives. Submitting an application with incomplete or missing information may delay processing of the incentive.
10. Participating electric utilities are those that are wholesale customers of MEAN. MEAN members/participants are listed at www.nmppenergy.org/mean.
11. The MEAN Services Committee and staff will make final determination of program compliance decisions and reserves the right to cancel the program with 30 days notice.
12. Neither the local electric utility nor MEAN warrant the performance of any material either expressly or implicitly. Contact the manufacturer, supplier or contractor for details regarding material warranties.
13. Program is subject to the Terms and Conditions as outlined on the application and to the guidelines listed here.

Program guidelines and applications are available at

www.nmppenergy.org/mean

Program Contact: Amanda Hansen (ahansen@nmppenergy.org)

MEAN
MUNICIPAL ENERGY AGENCY OF NEBRASKA



Cooling System Tune-up Program



Energy Efficiency Program

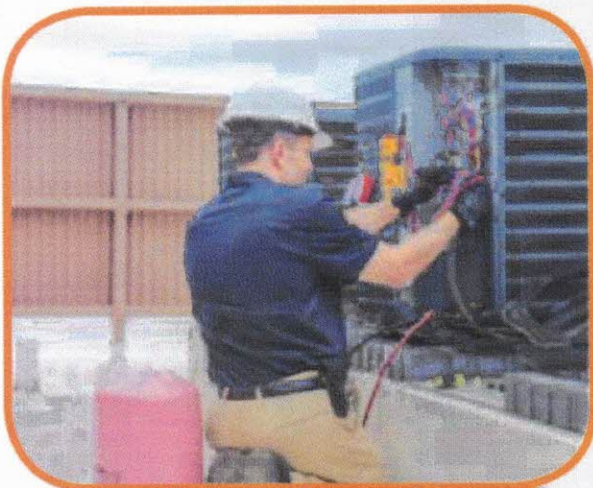
By your local public electric utility together with the Municipal Energy Agency of Nebraska

A \$30 incentive is available to homeowners that have their cooling system tuned up, regardless of what type or age of cooling system it is (air conditioner, air or water source heat pump).

The application includes a checklist of key components your contractor should inspect as well as items for discussion, such as filter replacement schedule, proper temperature set-back practices and an understanding of the general condition of the system.

Qualifications

- Incentives are available to customers who have their cooling system inspected and tuned up by an HVAC contractor.
- Qualifying systems include residential central-air conditioners, air source and water source heat pumps that are served by local electric utilities that are wholesale power supply participants of the Municipal Energy Agency of Nebraska (MEAN). MEAN members/participants are listed at www.nmppenergy.org/mean.
- Even though the cooling system may be serviced or tuned up frequently, the customer is only eligible for the \$30 incentive every two years (24 months).



Guidelines

1. The following guidelines will generally apply. Exceptions will be handled on a case-by-case basis.
2. Qualifying systems include any residential central cooling system that has been installed for at least one year, such as:
 - Air conditioner
 - Air source heat pump (electric or fossil fuel back-up)
 - Water source heat pump
3. The incentive payment is \$30.
4. Homeowner is only eligible to apply for an incentive every two years (24 months).
5. The incentive payment to the homeowner will come directly from MEAN. For renter/landlord situations, the party responsible for the cost of the tune up will receive the incentive.
6. All HVAC equipment must be permanently installed in a residential single-family dwelling. A mobile home must be on a permanent foundation.
7. For duplexes and condominiums that are separately metered, they will be considered residential, thus requiring two separate applications. If they are master metered, they are considered multifamily and not eligible. Apartments that are master metered are considered multi-family.
8. In those cases where two or more air conditioners or heat pumps are installed in the same house, both or all are eligible for the full incentive amount. Each requires its own application.
9. Window air conditioners, Package Terminal Air Conditioner (PTAC), and Package Terminal Heat Pumps (PTHP's) are not eligible. Only a ducted - split system is eligible.
10. Program is subject to the Terms and Conditions as outlined here and on the application.

Program guidelines and applications are available at

www.nmppenergy.org/mean

Program Contact: Amanda Hansen (ahansen@nmppenergy.org)

MEAN

MUNICIPAL ENERGY AGENCY OF NEBRASKA